

---

**Title**

Material Submittal for Fire Rated Door

**Brand**

**Falcon Gold**

---

# **Index**

- **Door Data Sheet.**
- *Fire Test Certificate (Intertek Approval).*
- **Door Accessories Data Sheets and Certificate.**
  - 1- *Honeycomb.*
  - 2- *Anchor.*
  - 3- *Powder Coating.*
  - 4- *Vision Glass.*
  - 5- *Mill Test Report.*
- **Civil Defence.**
- **Company Licence.**
- *Quality Plan.*
- *ISO Certificate.*
- *Draft Warranty.*

# ***Door Data Sheet.***

**Project Name** :

**FORT Fire Steel doors Specification**

<b>SR. NO</b>	<b>DESCRIPTION</b>	<b>PROPOSED SPECIFICATION</b>
1	Brand Name	Fort
2	Door and Frame Fire Resistance Standard	BS476 Part22(1987)/EN1634-1(2014)
3	Leaf Sheet Thickness	1mm
4	Leaf Thickness	45mm
5	Door Core	Honeycomb
6	Door Edges	Seamed
7	Door Finish Paint	Polyester powder coating
8	Frame Sheet Thickness	1.2mm
9	Frame Jamb Depth	150mm
10	Frame Construction	Welded
11	Frame Profile	Single rabbet
12	Door Fire Rating	Up to 120 Minutes
13	Vision Panel	-

## PRODUCTS

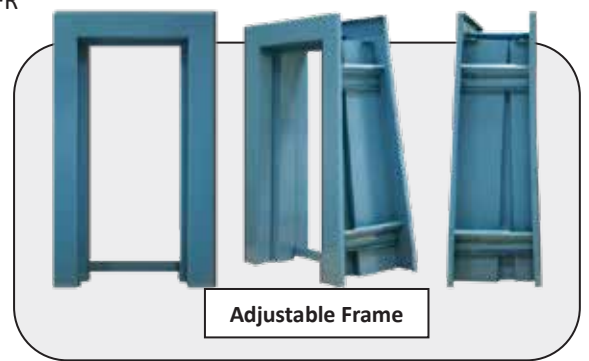
Bin Ghurair Trading is proud to be able to offer the supply and installation of many door products than ever before. Following is the list of our main Products.

### Steel doors and Frames

- **Fire rated hollow metal steel door & frame**
  - I. UL 10B/10C: 90 Min Fire rating
  - II. BS476: Part 22 (1987) from BRE (UK) for 180Min FR
  - III. BS476: Part 22 (1987) from Exova Warrington for 240Min FR
- **Non Fire rated hollow metal steel door & frame**
- **Special Door types from branded Supplier.**
  - I. Acoustic door (STC-30,STC-32,STC-37)
  - II. Temperature Rise Rated doors (TRR doors)
  - III. Smoke Proof Doors

### Builder's hardware (ironmongery)

- I. North American Hardware.
- II. European Hardware



## BGT Hard Wares

### Door Handles, Locks & Hinges

BGT's line of mortise, Handles available in a broad array of metal, designs, finishes. sizes, and weights and cylindrical, tubular, and dead bolt locks offers a comprehensive selection locks that meet the functional and aesthetic requirements of commercial and institutional doors.

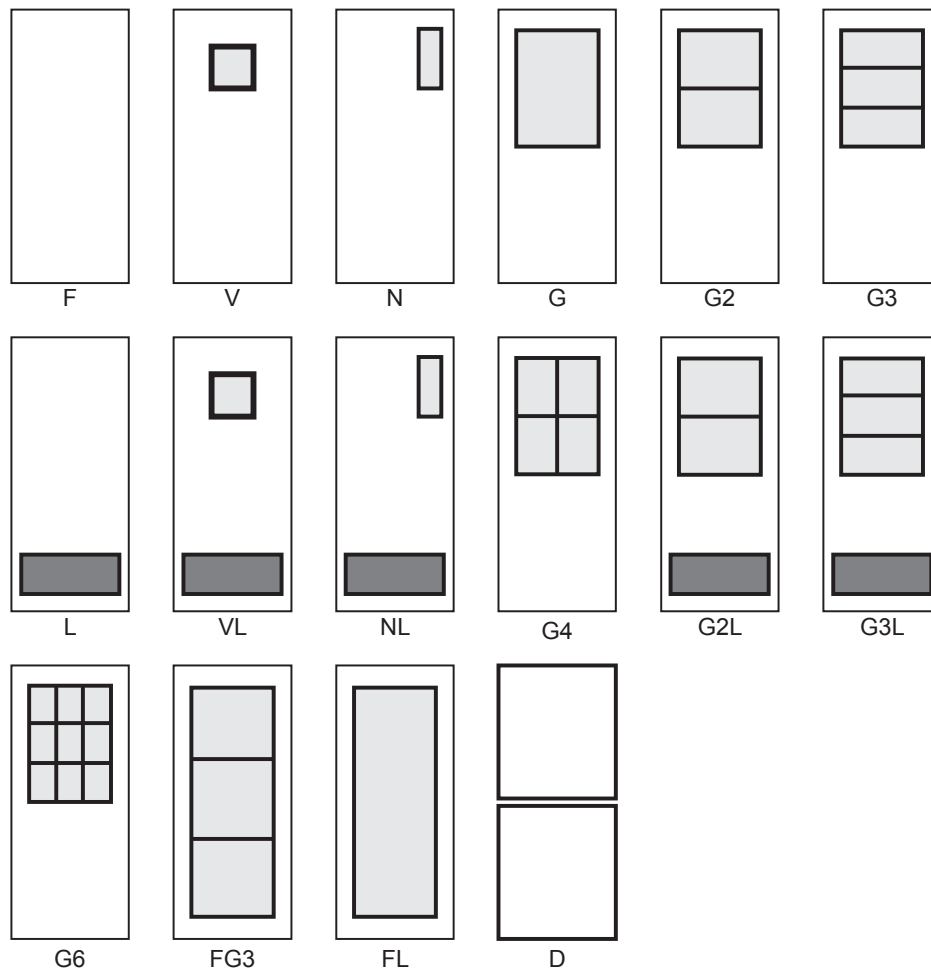
BGT offers the broadest range of full mortise hinges in a variety of metals, finishes, sizes, and weights to meet all your load bearing and security applications. They include two, three, and five knuckle styles, swing clear hinges, wide throw hinges, anchor hinges, electric hinges, institutional hinges and pivots.



**Nomenclature for standard FORT® door designs.**

**FORT®** door Designs are in accordance with ANSI A250.7-1997 “Nomenclature for standard steel doors & Steel frames” and ‘SDI 106-99 ‘Recommended Standard door type Nomenclature’.

**NOMENCLATURE FOR STANDARD DOOR DESIGNS**



**NOMENCLATURE LETTER SYMBOLS EXPLANATORY NOTES**

- F. 'Flush door'
- V. "Vision Lite Door", 250mm Square-lite.
- N. 'Narrow Lite Door", near the lock stile.
- G. 'Glass Door'
- L. "Louvered door" Fire rated & Non\_Fire rated
- FL. "Full Louvered Door"
- D. 'Dutch Door", A two panel door, separated horizontally

## **FORT®** Doors are available with many features

- ✓ Non-Handed
- ✓ Handed
- ✓ Seamed edge
- ✓ Seam edge track welded and filled
- ✓ Polystyrene core doors - NFR
- ✓ Honeycomb core doors - BS476 from Exova Warrington for 240Min FR
- ✓ Polyurethane core doors - NFR
- ✓ Rock wool, Steel stiffened core doors - UL 10B/10C: 90 Min Fire rating
- ✓ Steel Stiffened with any option of core
- ✓ Oversize doors and frames
- ✓ Double acting doors - NFR
- ✓ Transom panels
- ✓ Vertical or horizontal removable or non removable mullions
- ✓ Bi-fold doors
- ✓ Custom size doors
- ✓ Louver doors
- ✓ Doors with variety of vision panels in various sizes and shapes
- ✓ Pocket pivot preparations
- ✓ Concealed hardware preparation
- ✓ Mortise / Cylindrical lock preparation etc.
- ✓ Security Doors



### **BGT Service after sale,**

Due to our commitment to provide all our clients with top class service, we established BGT Maintenance Division to attend all service inquiry for all our existing installations in U.A.E.

We have invested in this Dept. to ensure high level of concern to attend all our client service calls within 48 hours policy and to become effective on practical performance of our service teams.

### **Our Features:**

Mobile equipped service vans which is able to perform all your door required maintenance

Our Toll free service to attend all your call at any time of the day.

4 service teams trained to solve all door problems within 2 hours.

### **BGT Maintenance work through two types of plans:**

- I. Annual Service Maintenance Contract for our client by attending 3 visits yearly with some standard replacement items to ensure the door excellent performance & longer lifetime.

Attend on call within 48 hours, means our Team will come to visit once he receive the call within 48 hours and charge on site.





***Fire Test Certificate  
(Intertek Approval).***

# Certificate of Compliance



This is a certificate of compliance to certify that the bearer has successfully completed the requirements of the above scheme which include the testing of products, the initial assessment, and are subject to continuing annual assessments of their compliance and testing of samples of products taken from production (as applicable to the scheme) and has been registered within the scheme for the products detailed.

You have been awarded:

## **WH Service Mark 2014 for Category D - Door/frame Assemblies**

Standards: BS 476 Part 22 (1987)

Certificate number: WHI18-29215809

**Organization:** Bin Ghurair Metal Industries L.L.C.

Plot No. 597-400

Dubai Investment Park 2

Dubai

United Arab Emirates

**Product:** Bin Ghurair - BS 476 Part 22 - Swinging Type Fire Door & Frame Assembly (Honeycomb Infill)

*Spec ID:* 43264

*Fire Rating:* 2 Hour Fire Rated, 4 Hour Fire Rated

*Label Traceability:* W/N 21535


*Listing Information:* See following page(s)

**Certification body:** Intertek Testing Services NA, Inc.

**Initial registration:** April 16, 2018

**Date of expiry:** December 31, 2023

**Issue status:** 8

Authorized By:   
**Jean-Philippe Kayl, Director of Certification**

**Intertek Testing Services NA, Inc.**  
545 E. Algonquin Road, Ste H., Arlington Heights, IL 60005 USA  
Phone: 847-439-5667 Fax: 847-439-7320

[www.intertek.com](http://www.intertek.com)

The certificate and schedule are held in force by regular annual surveillance visits by Intertek Testing Services NA, Inc. and the reader or user should contact Intertek to validate its status. This certificate remains the property of Intertek Testing Services NA, Inc. and must be returned to them on demand. This Certificate is for the exclusive use of Intertek's Client and is provided pursuant to the Certification agreement between Intertek and its Client. Intertek's responsibility and liability are limited to the terms and conditions of the agreement. Intertek assumes no liability to any party, other than to the Client in accordance with the agreement, for any loss, expense or damage occasioned by the use of this certificate. Only the Client is authorized to permit copying or distribution of this certificate and then only in its entirety. Use of Intertek's Certification mark is restricted to the conditions laid out in the agreement. Any further use of the Intertek name for the sale or advertisement of the tested material, product or service must first be approved in writing by Intertek. Initial Factory Assessments and Follow up Services are for the purpose of assuring appropriate usage of the Certification mark in accordance with the agreement, they are not for the purposes of production quality control and do not relieve the Client of their obligations in this respect.

## LISTING INFORMATION

### FIRE RESISTANT PRODUCT AND COMPONENTS

Fire door and frame assembly - Honeycomb infill type

### PRODUCT COVERED

Single and Double Leaf Steel Fire Door and Frame

### PRODUCT DESCRIPTION

Single and Double leaf (1mm thick), hollow metal type, honeycomb infill fire doors intended for use in masonry constructions.

The door frame (1.2mm thick) can be installed with or without grouting.

Limitations:

Minimum latch throw - 12mm.

### Maximum sizes for Single leaf door assembly:

**For 240 minutes rating** (as tested):

Single door frame - 976mm x 2200mm x 146mm (w x h x jamb depth)

Single door leaf - 870mm x 2132mm x 45mm (w x h x thickness)

Allowed Extended Sizes for **120 minutes or lower** fire rating:

	Width (mm) (30%)	Height (mm) (30%)	Area (sq. m) (35%)
Single Door Frame	1268 (at 2285mm height)	2860 (at 1014mm width)	2.90
Single Door Leaf	1131 (at 2214mm height)	2772 (at 903mm width)	2.50

Allowed Extended Sizes for **180 minutes** fire rating:

	Width (mm) (20%)	Height (mm) (20%)	Area (sq. m) (25%)
Single Door Frame	1171 (at 2292mm height)	2640 (at 1017mm width)	2.68
Single Door Leaf	1044 (at 2221mm height)	2558 (at 906mm width)	2.32

### Maximum sizes for Double leaf door assembly:

**For 240 minutes rating:** Double leaf door assembly not allowed for 240 minutes fire rating

**For 120 minutes rating:**

Maximum Double door frame size: 1952mm x 2200mm x 146mm (w x h x jamb depth)

Maximum Double door leaf size (each leaf): 870mm x 2132mm x 45mm (w x h x thickness)

Allowed Extended Sizes for **60 minutes or lower** fire rating:

	Width (mm) (20%)	Height (mm) (20%)	Area (sq. m) (25%)
Double Door Frame	2342 (at 2292mm height)	2640 (at 2033mm width)	5.37
Double Door Leaf	1044 (at 2221mm height)	2558 (at 906mm width)	2.32

Allowed Extended Sizes for **90 minutes** fire rating:

	Width (mm) (15%)	Height (mm) (15%)	Area (sq. m) (20%)
Double Door Frame	2244 (at 2296mm height)	2530 (at 2037mm width)	5.15
Double Door Leaf	1000 (at 2225mm height)	2452 (at 908mm width)	2.23

Allowed vision panel glass size - 225mm x 725mm x 5mm (w x h x thickness)

**RATINGS**

The single & double door and frame assembly has been evaluated in accordance with BS 476 Part 22 standards and achieved the following ratings:

Integrity	120 Minutes
-----------	-------------

Note: Single door assemblies are allowed for up to 240 Minutes Integrity Classification period

***Door Accessories  
Data Sheet.***



Located in the garden city of India, Bangalore, HonECORE™ is the largest selling premium paper honeycomb brand in India with a state of the art facility to manufacture paper honeycomb with highly advanced paper honeycomb production technology.

HonECORE™, today stands as a well renowned and the most recognized brand of paper honeycomb made in India and has, under its portfolio of client's, some of the distinguished players from the wood working, sheet metal and packaging industry.



**Complete range of paper honeycomb solutions through a single window approach with its strategic collaboration with**



**HonECORE™ provides end-to-end paper honeycomb solutions under one roof. Made from recycled kraft paper honECORE is 100 % Eco-Friendly, Borer and Termite free.**



## Distinct Cost Advantages of using honECORE-Paper Honeycomb

### Transportation Raw Material:

Particulars	Capacity	No of Doors that can be mfr.
1 truck 22'	16 tons	355 nos
1 truck 22'	16tons	9000 nos

### Transportation of finished products:

Particulars	Capacity	No of doors
1 Truck 22' Wood	16 tons	355
1 Truck 22' Honecore Doors	16tons	630

### Inventory Storage:

- 1 sqm pallet of honECORE can hold 500 doors material.
- You need 1375 cubic ft of space for the similar quantity of doors.



### Faster Production Times:

- Time taken to manufacture 1 wooden door the time taken against Honeycomb Doors.

Process Involved	Wooden Doors	Honeycomb Doors
Frame Assembly	2 mins	2 mins
Core Assemble	8 mins	1 min
Process Assembly	4 mins	2 mins
Pressing	7 mins	6 mins
Total Time Taken	21 mins	11 mins

## SUMMARY OF DISTINCT COST SAVING ADVANTAGES BY USING HONECORE™

- You get 25 times more material at the same logistic cost
- You save up to 50 % of transportation of finished honeycomb doors as compared to wooden doors.
- You save 90 % of inventory space
- 50 % faster production times saving 50 % of work force.



## HonECORE™-Technical Data Sheet

<b>Product Code</b>	<b>honECORE 1500/15</b>	<b>honECORE 1500/21</b>	<b>honECORE 1800/28</b>
Cell Size	15mm	21mm	28mm
Maximum Width(expanded)	Up to 1200 mm	Up to 1200 mm	Up to 1200 mm
Length	As per client specification	As per client specification	As per client specification
Thickness	6mm-500mm	6mm-500mm	6mm-500mm
Paper	150 gsm Recycled Kraft	150 gsm Recycled Kraft	180 gsm Recycled Kraft
Density	30 kg/m <sup>3</sup>	22kg/m <sup>3</sup>	18kg/m <sup>3</sup>
Compression Strength(@3% moisture content)	3.5 kg/cm <sup>2</sup>	1.75kg/cm <sup>2</sup>	1.95kg/cm <sup>2</sup>
Moisture Content(ex-works)	5-7 %	5-7%	5-7%

<b>Product Specification</b>	
Block Cut honECORE	<b><u>Standard Size (width* length)</u></b> honECORE 1500/15 – 915mm*2150mm honECORE 1500/21 - 915mm*2150mm honECORE 1800/28 – 1015mm*2150mm
Continuous honECORE	<b>Width upto 1200mm(expanded) and length specified by client.</b>
Minimum Order Quantity	<b>1000 sqm.</b>
honECORE EX/1500/D	<b>Recommended for Continuous honECORE.</b>

### **Annexure:**

1. Paper used is 100 % Eco-Friendly.
2. honECORE™ is 100 % Anti-Fungi, Borer and Termite Free
3. Greater compression strengths can be achieved by using honECORE expander EX/1500/D. The expander would further bring the moisture content of the paper below 3 %.





To achieve the most optimum compression values for a given specification of paper honeycomb, the moisture level's need to be to the minimum level possible.

### Introducing honECORE™ EX/1500/D expander series.

The honECORE™ EX/1500/D expander series are the state of the art and technologically most advanced paper honeycomb expander machines complimenting the usage of honECORE™-Paper Honeycomb Solutions.

The core comes in a continuous format which is fed through electric heating which in a controllable temperature ranging from 80-150 Degree Celsius expands remove's the moisture content from the paper to 2-3 % .

By this, the paper comes out in a expanded format which in turn bear's maximum compression value for a given surface area. This through an in built PLC controlled cutter is cut to desired lengths ready for production.

### The advantage of using the honECORE™ expander machine are:

#### **Optimum utilization of the raw material:**

Our client saves 20-25 % of the material as the honeycomb core is expanded and cut to sizes as against using the material manually.

Achieve maximum compressive strength as the moisture content of the material is brought down to 2-3 % before production.

#### **Faster production times:**

Up to 4m/min ( 2 doors/min) speed's can be achieved through honECORE EX/1500/D. Since the honeycomb is cut to size and adequately expanded (does not contract back as against using it manually), it increases production capabilities substantially.

#### **Saving of work force:**

Our client's save 2 workmen which would be required when one manually expands the honeycomb core.

Hence, we at team honECORE™ strongly recommend to our client's to procure the expander machine to get the best compression results and optimum utilization of the material i.e., achieve greater product quality and efficiency.




Particulars	Specifications
Motor power	0.2KW
Heating type	Electric heating
Total power for heating device	12 KW
Production speed (max)	4m/min
Applicable core paper width (Max)	1500mm
Expanded core paper width(Max)	1200mm
Thickness for core paper	10-90 mm
Dimension of machine	4200*1800*1300mm
Cutting Type	Automatic Cutting.

Model Number: honECORE™ Ex/1500/D





## HonECORE™ Applications:

SEMIFINISHED PANELS	
Overview of all facts:	
	<p><b>Design of lightweight panels</b></p> <p>Lightweight panels consist of three base elements:</p> <ul style="list-style-type: none"> <li>• <b>Top layer: top side and bottom side</b> <ol style="list-style-type: none"> <li>a. 3 mm, 4 mm MDF, HDF</li> <li>b. 3 mm, 4 mm Moisture resistant ply</li> <li>c. 4 mm, 8 mm Particle board</li> </ol> </li> <li>• <b>Core: Hexagonal Paper Honeycomb</b></li> <li>• <b>Frame: optional (with or without)</b></li> </ul>
	<p><b>Characteristic of lightweight panels</b></p> <p>Lightweight panels provide excellent characteristics for furniture construction and shop fitting.</p> <p><b>Weight reduction</b>      <b>Very high load capacity</b>  <b>High stability</b>          <b>Long service life</b>  <b>Wide spans</b>              <b>Almost no sagging</b>  <b>Optimized transport</b>   <b>Easy assembly</b>  <b>Eco friendly</b>  <b>Aesthetic appeal using thicker panels</b></p>
	<p><b>Use of lightweight panels</b></p> <p>The lightweight panels are suitable for a wide variety of applications in kitchens, living rooms and bedrooms. For example:</p> <p><b>Home furniture</b>          <b>Conference tables</b>  <b>Kitchen worktops</b>      <b>Shelving</b>  <b>Desks</b>                      <b>Shop fitting</b>  <b>Doors</b>                      <b>Partitions</b></p>



**In construction:**

- Doors (wooden, metal, frp etc)
- Panels – table top, kitchen cabinetry, flat panel modular furniture (ranging from 12mm up to 150mm thick panels and more)
- Clean Rooms/Panels
- False roofing, ceiling
- Office and Residential Interiors.
- Pin up boards, white boards.

**In Packaging:**

- Paper Pallets
- Void Fillers
- Separators
- Customised primary and secondary packaging.

*HonECORE™, is an evolutionary product that replaces non eco-friendly materials like wood and EPS in their respective applications while preserving the key virtues of their usage in the concerned applications. On its own HonECORE™ is an eco-friendly, versatile, flexible and lightweight material that has excellent compatibility with other materials and an excellent strength-to-weight ratio. It combines with plywood, steel, plastics, FRP and many other materials as its sandwich faces to form some of the strongest composite panels for its weight and dimensions. It is also more economical than most materials, thereby making it an ideal choice. As a product made from recycled paper and eco-friendly glue, it is a boon to the earth as a 100% bio-degradable, non polluting, eco-friendly material. Large scale usage of paper honeycomb can drastically boost a country's aim of preserving the nature.*

***So the change is visible.***

***The change is not the technology..***

***It is our "acceptance of the technology"***

***A technology which is lightweight, eco-friendly, sustainable and provides economy of operations.***

***It is time we accept the change..***

***It is time we "Get Wise"!***

***Join us .. it's the Green Revolution!***

Thanking you,  
Yours faithfully,  
For Lsquare Eco-Product's Pvt Ltd,

Rohit Bhandari  
(Business Development)

## METAL FRAM ANCHOR ZINC PLATED



**Art.No. 1904 41072**

Head configuration : Countersunk, Flat head  
 Environmental conditions: Indoor, dry conditions  
 Type of fastening : Through-fastening  
 Material composition: Steel, 4.6 grade, zinc-plated (min. 5 µm), Sheet steel, sendzimir zinc-plated to approx. 16µm  
 Installation direction : All  
 Material, corrosion : Steel, zinc-plated

Anchor Size	Drill (Φ)	Sleeve length (L)	Machine Screw	Drill Hole Depth	Fixing Length Max	Article No.	Item Name
φ10x172	10	72	M6x85	50	40	1904 41072	Metal Fram Anchor Zinc Plated 10*72
φ10x92	10	92	M6x105	50	60	1904 41092	Metal Fram Anchor Zinc Plated 10*92

# Product Data Sheet

## AkzoNobel Powder Coatings Interpon D1025 Texture

### Product Code Product Description

**JP437W**

**Interpon D1025 Texture (or Sandpaper, or Sablé)**, is a range of powder coatings with texture aspect, intended for use on architectural aluminium and galvanized steel. specifically formulated with TGIC. **Interpon D1025 Texture** has a better scratch resistance than many conventional systems.

As part of the Interpon D1025 series of architectural coatings, **Interpon D1025 Texture** gives excellent exterior durability and colour retention and conforms to the requirements of all the major architectural standards. All **Interpon D1025 Texture** are lead-free and meet the requirements of Qualicoat class 1, EN12206, and EN13438 (formerly BS6496 & BS6497), - as well as AAMA 2603-13.

**Qualicoat License Number:** P-1348 (UAE)

**Metallic colours approved:** Yes

### Powder Properties

<b>Chemical type</b>	Polyester
<b>Gloss (EN ISO 2813 (at 60°))</b>	<b>Texture</b>
<b>Particle size</b>	Suitable for electrostatic spray
<b>Specific gravity</b>	1.2 – 1.9 g/cm <sup>3</sup> depending on colour
<b>Storage</b>	Dry cool conditions below 30°C ( <i>open boxes must be resealed</i> )
<b>Shelf life</b>	24 months below 30°C
<b>Stoving schedule (Object Temperature)</b>	15-30 minutes at 190°C 10-20 minutes at 200°C 8-16 minutes at 210°C Test condition: <b>10 minutes at 200°C</b>

### Test Conditions

The results shown below are based on mechanical and chemical tests which (unless otherwise indicated) have been carried out under laboratory conditions and are given for guidance only. Actual product performance will depend upon the circumstances under which the product is used.

<b>Substrate</b>	Aluminium (0.5-0.8 mm Al Mg1)
<b>Pretreatment</b>	Chromate (DIN 50539)
<b>Application method</b>	Electrostatic spray
<b>Dry Film Thickness</b>	70 – 120 microns (as per the pattern size)
<b>Stoving Schedule</b>	<b>10 minutes at 200°C</b> (object temperature)

### Mechanical Tests

<b>Flexibility</b>	ISO1519 (cylindrical mandrel)	Pass 5mm
<b>Adhesion</b>	ISO2409 (2mm crosshatch)	Gt0
<b>Erichsen Cupping</b>	ISO1520	Pass 5mm
<b>Impact</b>	ISO6272:1993	Pass 2.5 Joules reverse & direct (20 in lb)
<b>Buchholz hardness</b>	ISO2815	>80

### Chemical Tests

<b>Acetic acid salt spray</b>	ISO9227	<16 mm <sup>2</sup> corrosion/10cm, 1000 hours
<b>Constant humidity</b>	ISO6260	No blistering, creep <1mm (1000 hours)
<b>Sulphur Dioxide</b>	ISO3231	Pass 30 cycles – no blistering, gloss loss or discoloration
<b>Permeability</b>	EN12206-5.10	Pressure Cooker – pass 1 hour no blistering

## Interpon D1025 Texture

<b>Chemical Resistance</b>		Generally good resistance to acid, alkalis and oil at normal temperatures
<b>Mortar Resistance</b>	EN12206-1	No effect after 24 hours
<b>Exterior durability</b>	ISO2810 (1 year)	>50% gloss retention Colour retention according to GSB standard/Qualicoat class 1 Chalking noe in excess of minimum in ASTM D659:1980
<b>Accelerated Weathering</b>	ISO 11341 (1000 hrs) QUV B 313 (300 hrs)	Gloss retention $\geq$ 50% Gloss retention $\geq$ 50%

### Pretreatment

For maximum protection it is essential to pretreat components prior to the application of **Interpon D1025 Texture**.

Aluminium components should receive a full multi-stage chromate conversion coating or suitable chrome-free pre-treatment or suitable pre-anodising to clean and condition the substrate. Detailed advice should be sought from the pre-treatment supplier.

Galvanised steel requires surface preparation by either multi-stage pretreatment using either zinc phosphate or chromate conversion or controlled sweep blasting. Depending on the type of galvanizing, degassing or use of anti-bubbling additives may be required – follow the procedural advice of the pretreatment supplier.

**Interpon D1025 Texture** products may also be used on cast or mild steel. For outdoor use, **Interpon PZ** anti-corrosive primer over a correctly prepared substrate is recommended.

### Application

**Interpon D1025 Texture** powders can be applied by manual or automatic electrostatic spray or tribo-charging equipment. For solid shades, unused powder can be reclaimed up to a maximum of 20% using suitable equipment and recycled through the system. Please consult AkzoNobel for further details as to the correct mixing ratio for virgin/reclaim powder.

All powders can show small colour differences from batch to batch, this is normal and unavoidable. While AkzoNobel take every precaution to minimize visible differences, this cannot be guaranteed. Applicators and fabricators are advised to use a single batch for parts that will be assembled together. Differences are more likely with special effect powders.

Bonded products have better application properties than blended products (more stable) but attention should still be paid to line settings in order to avoid “marble effect” and changes in aspect after recycling. For more details it is suggested to read the *Metallic Application Guideline*.

Different substrates (aluminium, steel, galvanized steel...), use of primer, and big changes in film thickness may give a different aspect.

Products with different codes should not be mixed even if same colour and gloss.

### Post Application

For specific advice on the suitability of post coating processes such as bending or the use of sealants, adhesives, thermal break, cleaning etc, please consult AkzoNobel.

### Maintenance

For specific advice on Cleaning and Maintenance, please consult the Interpon D series *Cleaning and Maintenance Guidelines* available from AkzoNobel.

### Safety Precautions

Please consult the Material Safety Datasheet (MSDS) available from AkzoNobel.

# Interpon D1025 Texture

---

## Disclaimer

## FOR PROFESSIONAL USE ONLY

**IMPORTANT NOTE:** The information in this data sheet is not intended to be exhaustive and is based on the present state of our knowledge and on current laws: any person using the product for any purpose other than that specifically recommended in the technical data sheet without first obtaining written confirmation from us as to the suitability of the product for the intended purpose does so at his own risk. It is always the responsibility of the user to take all necessary steps to fulfill the demands set out in the local rules and legislation. Always read the Material Data Sheet and the Technical Data Sheet for this product if available. All advice we give or any statement made about the product by us (whether in this data sheet or otherwise) is correct to the best of our knowledge but we have no control over the quality or the condition of the substrate or the many factors affecting the use and application of the product. Therefore, unless we specifically agree in writing otherwise, we do not accept any liability whatsoever for the performance of the product or for any loss or damage arising out of the use of the product. All products supplied and technical advices given are subject to our standard terms and conditions of sale. You should request a copy of this document and review it carefully. The information contained in this data sheet is subject to modification from time to time in the light of experience and our policy of continuous development. It is the user's responsibility to verify that this data sheet is current prior to using the product.

Brand names mentioned in this data sheet are trademarks of or are licensed to AkzoNobel.

---

Akzo Nobel UAE Paints L.L.C.  
Al Quoz Industrial Area 1  
Street No. 8  
Dubai  
United Arab Emirates

T +971 (0) 43472491  
F +971 (0) 43472339

For more information, contact your  
local AkzoNobel representative  
[www.interpon.com/contact-us](http://www.interpon.com/contact-us)

# APPROVAL

## for coating materials

The Association for Quality Controls in the Lacquering, Painting and Coating Industry, abbreviated to QUALICOAT, hereby grants an approval based on the test results

Report submitted by (Testing laboratory):	IFO GmbH, Institut für Oberflächentechnik
Date of issue of the Approval:	<b>03.05.2016</b>
Approval valid until:	<b>31.12.2017</b>
System name:	<b>Interpon D2525 fine texture</b>
Valid only for Sublimation:	No
Gloss Category:	<b>1</b>
Class:	<b>2</b>
Structured Finished:	Yes (Textured)
Extension for P/P:	No
Extension for sublimation:	No
Metallic colours approved:	Yes
Banned colours:	-
Manufactured by the company:	Akzo Nobel UAE Paints L.L.C.
Place:	AE - Dubai
P-No:	<b>P-1349</b>

This product may be described and labelled as follows

**Product tested and approved for the quality mark**



and may therefore be offered to all companies holding the quality label for paint, lacquer and powder coatings on aluminium for architectural applications

Zurich, 1 January 2017

**QUALICOAT**

*M. C. Panam*

Mohammed C. Panam  
President

*JS*

Josef Schoppig  
General Secretary



# APPROVAL

## for coating materials

The Association for Quality Controls in the Lacquering, Painting and Coating Industry, abbreviated to QUALICOAT, hereby grants an approval based on the test results

Report submitted by (Testing laboratory):	IFO GmbH, Institut für Oberflächentechnik
Date of issue of the Approval:	<b>14.02.2014</b>
Approval valid until:	<b>31.12.2017</b>
System name:	<b>Interpon D2525 Satin</b>
Valid only for Sublimation:	No
Gloss Category:	<b>2</b>
Class:	<b>2</b>
Structured Finished:	No
Extension for P/P:	No
Extension for sublimation:	No
Metallic colours approved:	Yes
Banned colours:	-
Manufactured by the company:	Akzo Nobel UAE Paints L.L.C.
Place:	AE - Dubai
P-No:	<b>P-1202</b>

This product may be described and labelled as follows

**Product tested and approved for the quality mark**



and may therefore be offered to all companies holding the quality label for paint, lacquer and powder coatings on aluminium for architectural applications

Zurich, 1 January 2017

**QUALICOAT**

*M. C. Panam*

Mohammed C. Panam  
President

*JS*

Josef Schoppig  
General Secretary

TELEPHONE (AREA CODE 214)

885-0593  
885-0894  
421-1400

CABLE ADDRESS "DALAB"

## DALLAS LABORATORIES, INC.

CONSULTANTS AND TECHNOLOGISTS  
ANALYTICAL AND RESEARCH CHEMISTS —  
CHEMICAL ENGINEERS — PETROLEUM ENGINEERS

P. O. BOX 152837  
1323 WALL ST.

DALLAS, TEXAS 75315

### MEMBERS

AMERICAN INSTITUTE OF CHEMICAL ENGINEERS  
NATIONAL SOCIETY OF PROFESSIONAL ENGINEERS  
TEXAS SOCIETY OF PROFESSIONAL ENGINEERS  
ASM INTERNATIONAL  
SOCIETY OF PETROLEUM ENGINEERS OF AIME

### MEMBERS

AMERICAN CHEMICAL SOCIETY  
AMERICAN SOCIETY FOR TESTING MATERIAL  
AMERICAN NATIONAL STANDARDS INSTITUTE  
AMERICAN SOCIETY FOR QUALITY CONTROL

Submitted by: Interpon Powder Coatings  
Technical Group Leader - Industrial  
4150 East 56th St.  
Cleveland, OH 44105

Date: April 13, 2005

Attn: Bob Rowles

Report No.: 36048  
P.O. #4500126529

## REPORT

### Sample:

Coated aluminum extrusions  
Paint: Interpon YM 205U  
Production Date: Unknown  
Cure: 15 minutes @ 400°F  
Pre-treatment: Chromate  
Drawing: Not Supplied

### A. Procedure

Submitted sample was tested for information purpose according to AAMA 2604-02 "Voluntary Specification, Performance Requirements and Test Procedures for High Performance Organic Coatings on Aluminum Extrusions and Panels", Sections 7.1 through 7.8.2, with the following results:

### B. Results

<u>Test</u>	<u>Results</u>	<u>AAMA 2604-02 Specification Requirements</u>
7.1 Color Uniformity	Standard	Standard
7.2 Specular Gloss	20.3	As Reported
7.3 Dry Film Hardness	Pass F	F Hardness and No Film Rupture
7.4 Film Adhesion		
7.4.1.1 Dry	Pass	No Removal of Film from Substrate
7.4.1.2 Wet	Pass	No Removal of Film from Substrate
7.4.1.3 Boiling Water	Pass	No Removal of Film from Substrate
7.5 Impact Resistance	Pass	No Removal of Film from Substrate.

THE ANALYSES OF THE ABOVE SAMPLE OR SAMPLES DO NOT IMPLY AN ENDORSEMENT. THIS REPORT, OR ANY PART THEREOF MAY NOT BE REPRODUCED OR USED FOR ADVERTISING PURPOSES WITHOUT OUR EXPRESS WRITTEN CONSENT.

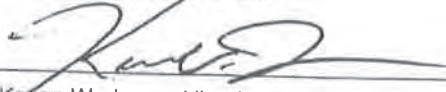
<u>Test</u>	<u>Results</u>	<u>AAMA 2604-02 Specification Requirements</u>
7.6 Abrasion Resistance	Pass (ACV = 42)	ACV 20 minimum
7.7 Chemical Resistance		
7.7.1 Muriatic Acid	Pass	No Blistering or Visible Change
7.7.2 Mortar	Pass	No Blistering or Visible Change
7.7.3 Nitric Acid	Pass ( $\Delta E = 0.04$ )	Hunter, Delta E = 5 max.
7.7.4 Detergent	Pass	No Film Adhesion Loss or Visible Change
7.7.5 Window Cleaner Resistance	Pass	No Blistering or Noticeable Change in Appearance and No Film Loss
7.8 Corrosion Resistance		
7.8.1 Humidity	Pass (No blisters)	Not Greater Than Few & No. 8 blisters
7.8.2 Salt Spray Scribe Field	Pass 9 9	7 Minimum Rating 8 Minimum Rating

Date Testing Started: 8-19-04  
Date Testing Completed: 4-7-05  
Date Test Report Expires: N/A

Testing Conducted At: Dallas Laboratories, Inc., 1323 Wall Street, Dallas, Texas 75215.

The test results indicate that sample tested is in compliance with all of the performance requirements of AAMA 2604-02 for High Performance Organic Coatings on Aluminum Extrusions and Panels, except for Section 7.9 Weathering which must be furnished by the coating supplier for full compliance to AAMA 2604 as specified by AAMA.

DALLAS LABORATORIES, INC.

  
Kevan W. Jones, Vice President

Analyst: GF  
KWJ:td



# REPORT

issued by an Accredited Testing Laboratory

Contact person  
**Maria Rådemar**  
Chemistry and Materials Technology  
+46 10 516 51 65  
maria.rademar@sp.se

Date  
2011-11-18

Reference  
FX118486-2

Page  
1 (3)



Akzo Nobel Powder Coatings  
Roger Strömvall  
c/o International Färg AB  
Box 44  
424 22 ANGERED

## Emission measurement after 4 weeks

(1 appendix)

### Object

One sample of a lacquer was supplied to SP by the client. The lacquer arrived applied on stainless steel plates.

Sample marking:

**Interpon D2525**  
lacquered 2011-10-05 by client  
60 – 110 µm  
25 x 25 cm, 2 plates

Date of arrival:

2011-10-11

### Work requested

Emission measurements regarding volatile organic compounds (VOC) including carcinogenic substances (VOC-substances according to EU Directive 67/548/EEC kategori 1 and 2) and formaldehyde.

### Methods

The emission was measured according to SS-EN ISO 16000-10:2006 "Indoor air – Part 10: Determination of the emission of volatile organic compounds from building products and furnishing – Emission test cell method", but only 28 days after application.

Tenax TA was used as adsorption medium for VOC. The Tenax tubes were thermally desorbed and analysed in accordance to ISO 16000-6:2004 (Determination of volatile organic compounds in indoor and test chamber air by active sampling on Tenax TA sorbent, thermal desorption and gas chromatography using MS/FID), accredited SP method 0601. This means an analysis in a gas chromatograph and detection with a flame ionisation detector (FID) and mass selective detector (MS). The FID signals are used for compound quantification. The total volatile organic compounds (TVOC) means compounds eluting between and including n-hexane to octadecane, having boiling points in the range of about 70-320 °C. The TVOC is quantified in toluene equivalents and includes all compounds  $ca \geq 1 \mu\text{g}/\text{m}^3$ . The mass selective detector is used for identification of single compounds, quantified in compound specific amounts when possible, otherwise in toluene equivalents. Quantification limit for carcinogenic substances is  $0.5 \mu\text{g}/\text{m}^2\text{h}$ .

The sampling of formaldehyde was carried out with DNPH samplers. The analysis of the samplers were carried out according to ISO 16000-3:2001 "Indoor air--Part 3:Determination of

---

### SP Technical Research Institute of Sweden

Postadress  
SP  
Box 857  
SE-501 15 BORÅS  
Sweden

Bestöksadress  
Västeråsen  
Brinellgatan 4  
SE-504 62 BORÅS

Tfn / Fax / E-post  
+46 10 516 50 00  
+46 33 13 55 02  
info@sp.se

Laboratorier ackrediteras av Styrelsen för ackreditering och teknisk kontroll (SWEDAC) enligt svensk lag. Denna rapport får endast återges i sin helhet, om inte utfärdande laboratorium i förväg skriftligen godkänt annat.

formaldehyde and other carbonyl compounds – Active sampling method”, accredited SP method 2302. This means analysis on a liquid chromatograph with absorbance detector.

The specimens were stored for 22 days in a room with controlled climate conditions of  $23 \pm 2$  °C and  $50 \pm 5$  % RH. One of the test specimens was put into the test cell 24 h prior to air samplings of VOC and formaldehyde. Air samplings were carried out at 2011-11-03,

Conditions of the test in the FLEC cell:

Test chamber volume	0.000035 m <sup>3</sup>
Area of sample	0.0177 m <sup>2</sup>
Air change rate	171 h <sup>-1</sup>
Area specific air change rate	0.34 m <sup>3</sup> /m <sup>2</sup> h
Temperature	23 ± 1 °C
Relative Humidity	50 ± 5 % RH

## Results

The results are expressed as area specific emission rates:

$$SER_A = \frac{Conc \times n}{L}$$

$SER_a$  = area specific emission rate, in  $\mu\text{g}/\text{m}^2\text{h}$   
 Conc = concentration of a VOC in the test cell, in  $\mu\text{g}/\text{m}^3$   
 n = air exchange rate, in changes per hour  
 L = loading factor, in  $\text{m}^2/\text{m}^3$  (area of sample/volume of test cell)

### Interpon D2525:

Volatile organic compounds	Retention time (min)	CAS number	ID <sup>1</sup>	Emission rate ( $\mu\text{g}/\text{m}^2\text{h}$ )
<b>TVOC (C<sub>6</sub> – C<sub>16</sub>)</b>	5.0 - 36.0	--	B	< 10
<b>Identified substances:</b>				
No substances identified	--	--	--	< 2
<b>Carcinogenic substances<sup>2</sup></b>				
No substances identified	--	--	--	< 0.5
<b>Substances outside VOC (C<sub>6</sub> – C<sub>16</sub>):</b>				
$\Sigma\text{VVOC} (< \text{C}_6)^3$	3.5 – 5.0	--	B	< 10
No substances identified	--	--	--	--
$\Sigma\text{SVOC} (\text{C}_{16} - \text{C}_{22})^4$	36.0 - 42.0	--	B	< 10
No substances identified	--	--	--	--
Formaldehyde	--	50-00-0	A	< 2

<sup>1)</sup> ID: A = identified compound specific, B = identified as toluene-equivalent



- 2) VOC-substances, according to EU Directive 67/548/EEC kategori 1 and 2  
3)  $\sum$ VVOC = the sum of very volatile organic compounds, as defined in ISO 16000-6  
4)  $\sum$ SVOC = the sum of semi-volatile organic compounds, as defined in ISO 16000-6

Quantification limit for TVOC is 10  $\mu\text{g}/\text{m}^3\text{h}$ . Only VOC-compounds with a concentration higher than 2  $\mu\text{g}/\text{m}^3\text{h}$  are listed in the table (carcinogenic compounds > 0.5  $\mu\text{g}/\text{m}^3\text{h}$ ). Measurement uncertainty for VOC is 15 % (rel) and for formaldehyde 30 % (rel).

See Appendix 1 for gas chromatogram (FID spectra).

### Summary

The amount of total volatile organic compounds (TVOC) was below quantification limit, that is very low emission.

No single substance was identified, they were all less than 0.5  $\mu\text{g}/\text{m}^3\text{h}$ .

### SP Technical Research Institute of Sweden Chemistry and Materials Technology - Organic Analytical Chemistry

Performed by

Examined by

Maria Rådemar

Marcus Vestergren

### Appendix

#### 1. Gas Chromatogram



**REPORT**

Date 2011-11-18 Reference FX118486-2

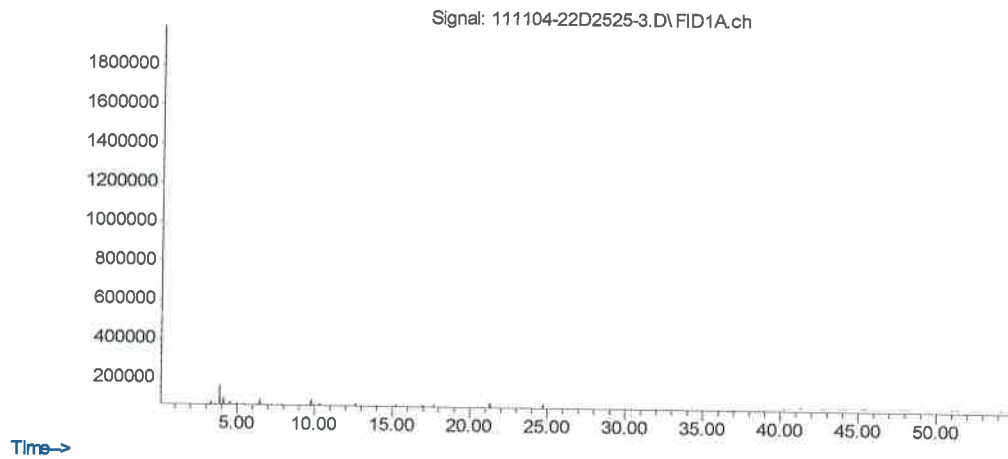
Page 1 (1)

Appendix 1

**Gas Chromatogram**

**Interpon D2525:**

Abundance



Compound with retention time 3.9 min is a contamination from analysis system.



*This is to certify that*

**Akzo Nobel UAE Paints L.L.C**

*Supports the promotion and development of Sustainable Buildings  
in the United Arab Emirates, and is a*

**Corporate Member**

*of the*

**مجلس الامارات للابنية الخضراء  
Emirates Green Building Council**

*January 2017 – December 2017*

  
**Saeed Al Abbar**  
Chairman

  
**Habiba Al Marashi**  
Founder, Vice-Chairman & Treasurer















동부제철  
DONGBU STEEL CO., LTD.

\* HEAD OFFICE: 7F, Seoul Square, 416, Hangeang-daero, Jung-gu, Seoul, Korea, 04637

TEL: (02) 8450-8114

E-MAIL: dbssteel@dongbu.com

\* Dangjin Works/Cold Rolling Mill

Dangjin-si, Chungcheongnam-do, Korea  
TEL: (041) 351-8313

검사증서  
INSPECTION CERTIFICATE

ORIGINAL

CERTIFICATE NO : 82085918  
발급일: 2019.01.10  
DATE OF ISSUE : JAN.10.2019  
계약번호: FF1901040  
COMMODITY : GALVANNEALED STEEL SHEET IN COILS  
SPECIFICATION : ASTM A 653-96 CS TYPE A

고객명: BIN GHURAIR  
SHIPPER : (주) 에스엘피엘에스

DESTINATION : JERFAL AI

ORDER SIZE	PACK-AGE NO	INSPECTION NO	CHARGE NO	DR #		KGS	LBS	THICK	WIDTH	LENGTH	Y.P	T.S	EL.	TENSILE TEST	DIMENSION(mm)	QUANTITY	PRODUCT NO	SIZE TOTAL	FILE TOTAL	SIZE TOTAL	FILE TOTAL	
				DR #	COIL LENGTH (m,ft)																	
06 A40				774	4.170	9.193	1.500	1500.0	001L	303.0	370.7	37.2	0.0000	57	370.7	45.105	07 A40	4.681	20.460	45.105	38.133	320.572
06 A40				774	4.170	9.193	1.500	1500.0	001L	303.0	370.7	37.2	0.0000	57	370.7	45.105	07 A40	4.681	20.460	45.105	38.133	320.572
06 A40				774	4.170	9.193	1.500	1500.0	001L	303.0	370.7	37.2	0.0000	57	370.7	45.105	07 A40	4.681	20.460	45.105	38.133	320.572
06 A40				774	4.170	9.193	1.500	1500.0	001L	303.0	370.7	37.2	0.0000	57	370.7	45.105	07 A40	4.681	20.460	45.105	38.133	320.572
06 A40				774	4.170	9.193	1.500	1500.0	001L	303.0	370.7	37.2	0.0000	57	370.7	45.105	07 A40	4.681	20.460	45.105	38.133	320.572
06 A40				774	4.170	9.193	1.500	1500.0	001L	303.0	370.7	37.2	0.0000	57	370.7	45.105	07 A40	4.681	20.460	45.105	38.133	320.572
06 A40				774	4.170	9.193	1.500	1500.0	001L	303.0	370.7	37.2	0.0000	57	370.7	45.105	07 A40	4.681	20.460	45.105	38.133	320.572
06 A40				774	4.170	9.193	1.500	1500.0	001L	303.0	370.7	37.2	0.0000	57	370.7	45.105	07 A40	4.681	20.460	45.105	38.133	320.572
06 A40				774	4.170	9.193	1.500	1500.0	001L	303.0	370.7	37.2	0.0000	57	370.7	45.105	07 A40	4.681	20.460	45.105	38.133	320.572
06 A40				774	4.170	9.193	1.500	1500.0	001L	303.0	370.7	37.2	0.0000	57	370.7	45.105	07 A40	4.681	20.460	45.105	38.133	320.572
06 A40				774	4.170	9.193	1.500	1500.0	001L	303.0	370.7	37.2	0.0000	57	370.7	45.105	07 A40	4.681	20.460	45.105	38.133	320.572
06 A40				774	4.170	9.193	1.500	1500.0	001L	303.0	370.7	37.2	0.0000	57	370.7	45.105	07 A40	4.681	20.460	45.105	38.133	320.572
06 A40				774	4.170	9.193	1.500	1500.0	001L	303.0	370.7	37.2	0.0000	57	370.7	45.105	07 A40	4.681	20.460	45.105	38.133	320.572
06 A40				774	4.170	9.193	1.500	1500.0	001L	303.0	370.7	37.2	0.0000	57	370.7	45.105	07 A40	4.681	20.460	45.105	38.133	320.572
06 A40				774	4.170	9.193	1.500	1500.0	001L	303.0	370.7	37.2	0.0000	57	370.7	45.105	07 A40	4.681	20.460	45.105	38.133	320.572
06 A40				774	4.170	9.193	1.500	1500.0	001L	303.0	370.7	37.2	0.0000	57	370.7	45.105	07 A40	4.681	20.460	45.105	38.133	320.572
06 A40				774	4.170	9.193	1.500	1500.0	001L	303.0	370.7	37.2	0.0000	57	370.7	45.105	07 A40	4.681	20.460	45.105	38.133	320.572
06 A40				774	4.170	9.193	1.500	1500.0	001L	303.0	370.7	37.2	0.0000	57	370.7	45.105	07 A40	4.681	20.460	45.105	38.133	320.572
06 A40				774	4.170	9.193	1.500	1500.0	001L	303.0	370.7	37.2	0.0000	57	370.7	45.105	07 A40	4.681	20.460	45.105	38.133	320.572
06 A40				774	4.170	9.193	1.500	1500.0	001L	303.0	370.7	37.2	0.0000	57	370.7	45.105	07 A40	4.681	20.460	45.105	38.133	320.572
06 A40				774	4.170	9.193	1.500	1500.0	001L	303.0	370.7	37.2	0.0000	57	370.7	45.105	07 A40	4.681	20.460	45.105	38.133	320.572
06 A40				774	4.170	9.193	1.500	1500.0	001L	303.0	370.7	37.2	0.0000	57	370.7	45.105	07 A40	4.681	20.460	45.105	38.133	320.572
06 A40				774	4.170	9.193	1.500	1500.0	001L	303.0	370.7	37.2	0.0000	57	370.7	45.105	07 A40	4.681	20.460	45.105	38.133	320.572
06 A40				774	4.170	9.193	1.500	1500.0	001L	303.0	370.7	37.2	0.0000	57	370.7	45.105	07 A40	4.681	20.460	45.105	38.133	320.572
06 A40				774	4.170	9.193	1.500	1500.0	001L	303.0	370.7	37.2	0.0000	57	370.7	45.105	07 A40	4.681	20.460	45.105	38.133	320.572
06 A40				774	4.170	9.193	1.500	1500.0	001L	303.0	370.7	37.2	0.0000	57	370.7	45.105	07 A40	4.681	20.460	45.105	38.133	320.572
06 A40				774	4.170	9.193	1.500	1500.0	001L	303.0	370.7	37.2	0.0000	57	370.7	45.105	07 A40	4.681	20.460	45.105	38.133	320.572
06 A40				774	4.170	9.193	1.500	1500.0	001L	303.0	370.7	37.2	0.0000	57	370.7	45.105	07 A40	4.681	20.460	45.105	38.133	320.572
06 A40				774	4.170	9.193	1.500	1500.0	001L	303.0	370.7	37.2	0.0000	57	370.7	45.105	07 A40	4.681	20.460	45.105	38.133	320.572
06 A40				774	4.170	9.193	1.500	1500.0	001L	303.0	370.7	37.2	0.0000	57	370.7	45.105	07 A40	4.681	20.460	45.105	38.133	320.572
06 A40				774	4.170	9.193	1.500	1500.0	001L	303.0	370.7	37.2	0.0000	57	370.7	45.105	07 A40	4.681	20.460	45.105	38.133	320.572
06 A40				774	4.170	9.193	1.500	1500.0	001L	303.0	370.7	37.2	0.0000	57	370.7	45.105	07 A40	4.681	20.460	45.105	38.133	320.572
06 A40				774	4.170	9.193	1.500	1500.0	001L	303.0	370.7	37.2	0.0000	57	370.7	45.105	07 A40	4.681	20.460	45.105	38.133	320.572
06 A40				774	4.170	9.193	1.500	1500.0	001L	303.0	370.7	37.2	0.0000	57	370.7	45.105	07 A40	4.681	20.460	45.105	38.133	320.572
06 A40				774	4.170	9.193	1.500	1500.0	001L	303.0	370.7	37.2	0.0000	57	370.7	45.105	07 A40	4.681	20.460	45.105	38.133	320.572
06 A40				774	4.170	9.193	1.500	1500.0	001L	303.0	370.7	37.2	0.0000	57	370.7	45.105	07 A40	4.681	20.460	45.105	38.133	320.572
06 A40				774	4.170	9.193	1.500	1500.0	001L	303.0	370.7	37.2	0.0000	57	370.7	45.105	07 A40	4.681	20.460	45.105	38.133	320.572
06 A40				774	4.170	9.193	1.500	1500.0	001L	303.0	370.7	37.2	0.0000	57	370.7	45.105	07 A40	4.681	20.460	45.105	38.133	320.572
06 A40				774	4.170	9.193	1.500	1500.0	001L	303.0	370.7	37.2	0.0000	57	370.7	45.105	07 A40	4.681	20.460	45.105	38.133	320.572
06 A40				774	4.170	9.193	1.500	1500.0	001L	303.0	370.7	37.2	0.0000	57	370.7	45.105	07 A40	4.681	20.460	45.105	38.133	320.572
06 A40				774	4.170	9.193	1.500	1500.0	001L	303.0	370.7	37.2	0.0000	57	370.7	45.105	07 A40	4.681	20.460	45.105	38.133	320.572
06 A40				774	4.170	9.193	1.500	1500.0	001L	303.0	370.7	37.2	0.0000	57	370.7	45.105	07 A40	4.681	20.460	45.105	38.133	320.572
06 A40				774	4.170	9.193	1.500	1500.0	001L	303.0	370.7	37.2	0.0000	57	370.7	45.105	07 A40	4.681	20.460	45.105	38.133	320.572
06 A40				774	4.170	9.193	1.500	1500.0	001L	303.0	370.7	37.2	0.0000	57	370.7	45.105	07 A40	4.681	20.460	45.105	38.133	320.572
06 A40				774	4.170	9.193	1.500	1500.0	001L	303.0	370.7	37.2	0.0000	57	370.7	45.105	07 A40	4.681	20.460	45.105	38.133	320.572
06 A40				774	4.170	9.193	1.500	1500.0	001L	303.0	370.7	37.2	0.0000	57	370.7	45.105	07 A40	4.681	20.460	45.105	38.133	320.572
06 A40				774	4.170	9.193	1.500	1500.0	001L	303.0	370.7	37.2	0.0000	57	370.7	45.105	07 A40	4.681				

CERTIFICATE NO : 82085918  
 DATE OF ISSUE : JAN.10.2019  
 CONTRACT NO : EE1901040  
 COMMODITY : GALVANNEALED STEEL SHEET IN COILS  
 SHIPPER : (주) 에스티인테이크  
 CUSTOMER : BIN GHURAIR  
 SPECIFICATION : ASTM A 653-96 CS TYPE A

**검사증명서**  
**INSPECTION CERTIFICATE**

ORIGINAL

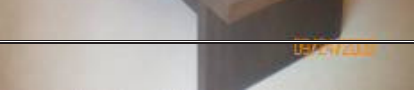
\* HEAD OFFICE: 7F, Seoul Square, 416,  
 Hangang-daero, Jung-gu,  
 Seoul, Korea, 04637  
 TEL: (02) 3450-8114  
 E-MAIL: dsteel@dongbu.com  
 \* Dangjin Works/Cold Rolling Mill  
 : 1228, Bukusaeneop-ro, Songhak-eup,  
 Dangjin-si, Chungcheongnam-do, KOREA  
 TEL: (041) 351-8813

ORDER SIZE	PACK-AGE NO	INSPECTION NO	CHARGE NO	COIL LENGTH (m,ft)		KGS	LBS	THICK-NESS	WIDTH LENGTH	Y.P	T.S	EL.	TENSILE TEST		COATING	WEIGHT (g/m <sup>2</sup> )	CHEMICAL COMPOSITION(%)					REMARKS
				mm	inch								mm	inch			C	P	S	SI	Mn	
35				38,139	145,410	320,572											X 1000	X 100	X 100	X 1000		
== GRAND TOTAL ==																						

\* ORGANIC  
 Y : Yes  
 N : No  
 O : Non-Oil Post Treatment  
 B : Big Coil  
 \* CHEMICAL TREATMENT  
 N : NO CHROMATED  
 H : HEAVY CHROMATED  
 C : NORMAL CHROMATED  
 L : LOW CHROMATED  
 \* OIL TREATMENT  
 U : UNOILED (DRY)  
 H : HEAVY OILED  
 N : NORMAL OILED  
 L : LIGHTLY OILED  
 S : SLIGHTLY OILED  
 B : BIG HEAVY OILED

CHIEF OF QUALITY ASSURANCE TEAM





Doors

Partitions

# *Quality Plan.*



الشرق الأوسط للعزل د.م.م.  
Middle East Insulation LLC  
*Quality Cladding Systems*



بن غوير التجارية د.م.م.  
Bin Ghurair Trading LLC



## QUALITY POLICY

- To maintain a leading position in the quality of products in company scope.
- To meet the national/ international standards , codes/legal requirements
- To achieve continual improvement in products and services by setting quality objectives.
- To meet our customer satisfaction.





الشرق الأوسط للعوازل ذ.م.م.  
Middle East Insulation LLC  
*Quality Cladding Systems*



بن غوير التجارية ذ.م.م.  
Bin Ghurair Trading LLC



## QUALITY MANAGEMENT MANUAL

### Quality Objectives:

The overall objective of the organization is continuous growth improved business. We understand this can be achieved only if we succeed to meet customer requirements. In order to achieve this primary objective, quality objectives are established at relevant functions. Whenever possible & required, the management has defined measurable objectives to evaluate the system performance at defined intervals. Some of the functional objectives are listed below whereas the other objectives are defined during various management review meetings.

### Management Representative:

- ✓ Plan and execute at least one round of internal quality audits every six months to identify the weakness in procedures and processes.
- ✓ Provide quality system awareness training to all new employees.
- ✓ Provide quality improvement proposal during every management review meeting.
- ✓ Review and log all customer feedback and customer complaints, prepare the statistical summary on every six months and report to the Group Director/GM about the trend for effective improvement actions.

### Customer related process (Sales):

- ✓ Sales Manager & Sales Engineers from MEI, BGT and RESOLCO are primary responsible for this operation and the objectives:
- ✓ Improve the business @ 10% every year in overall sales or every section like CLADDING, BAAB, EPS, RESOLCO & BGT doors.
- ✓ Develop the business to new heights and technologies, which have wide scope in the market.
- ✓ Measure customer satisfaction and action for improvements.

**Purchasing:**

- ✓ Re-evaluate all suppliers to monitor the supplier's performance within acceptable limits.
- ✓ Review the purchasing documents to understand the frequently purchased consumables and hence to establish minimum stock level. (To avoid the wastages of resources spend on frequent purchase, inspection and transportation.)

**Finance & Account:**

- ✓ Perform the project costing for all projects and prepare the statistical report to identify the weakness in estimation.
- ✓ Prepare the database for potential customers, who settle payments within the stipulated time frame.
- ✓ Settle payment to suppliers on time.

**Production:**

- ✓ Review all production non-conformances (minor / major) reported during inspection as well as customer complaints to decide upon the process improvements and training requirements of operations staff.

**Quality Control:**

- ✓ Analyze the various wastages, set targets for the reduction of wastes.
- ✓ Analyze the data of rejections/ failures in final inspection or client inspections on annual basis and define better controls over in process inspection.
- ✓ Quality Objectives has been established for the departments/sections such as Planning, Production, Quality, Sales, Purchase, Stores, Technical, Projects, Dispatch, Administration and Maintenance and is under the control of MR.

*ISO Certificate.*

# CERTIFICATE AWARDED TO



**BIN GHURAIR METAL INDUSTRIES L.L.C**

at

P.O.BOX NO: 55686, OFFICE NO: 597-400, BIN GHURAIR, DIP 2, DUBAI, UAE

Quality Registrar Systems certify that the management system of the above organization has been audited and found to be in compliance with the QRS requirements for registration of the management system standard detailed below:

**ISO 9001:2015**

Quality Management Systems

Scope of work

**MANUFACTURING AND INSTALLATION OF FIRE RATED STEEL DOORS**

EA 17

Certificate No: DQU-10724

Originally Registered: 15 MAR 2017

Latest Issue: 25 MAR 2021

Valid up-to: 14 MAR 2023

Quality Registrar Systems



**eiāci**  
مركز الإمارات العالمي للاعتماد  
Emirates International Accreditation Centre  
CB-QMS-037



**MANAGING OFFICE ADDRESS:**

Quality Registrar Systems  
P.O. Box :26826  
United Arab Emirates

Tel: +971-2-6714302  
Fax: +971-2-6741449  
[www.qrsyst.com](http://www.qrsyst.com)

**WORLD WIDE CERTIFICATION**

This certificate is the property of Quality Registrar Systems and remains valid subject to satisfactory annual surveillance audit. This certificate is only valid when confirmed by the Register listed in the Quality Registrar Systems ([qrsyst.com](http://qrsyst.com))



# Certificate Of Registration

Awarded to



## QRS

بن غوير التجارية ذ.م.م.

**Bin Ghurair Trading LLC**

at

P.O. BOX NO: 55686, PLOT NO: 597-400, DUBAI INVESTMENT PARK -2, DUBAI, UAE

Quality Registrar Systems certify that the management system of the above organization has been audited and found to be in compliance with the QRS requirements for registration of the management system standard detailed

below:

### ISO 9001:2015

Quality Management Systems

Scope of work

TRADING OF FIRE RATED STEEL DOORS, SECTIONAL OVERHEAD DOORS, FIRE RATED ROLLING SHUTTERS, FOLDABLE DOORS, FIRE RATED ACCESS DOORS, SLIDING DOORS & RELATED IRONMONGERY

IAF 29

Certificate No: DQU-12398

Originally Registered: 05 DEC 2018

Latest Issue: 05 JAN 2022

Valid up-to: 04 DEC 2024

  
Quality Registrar Systems



#### MANAGING OFFICE ADDRESS:

Quality Registrar Systems  
P.O. Box :26826  
United Arab Emirates

Tel: +971-2-6714302

Fax: +971-2-6741449

www.qrsyst.com

WORLD WIDE CERTIFICATION