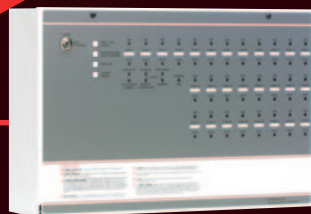


**Context**<sup>®</sup>  
Plus

Conventional Fire Equipment Catalogue



# EP203/CON AUTOMATIC EXTINGUISHER PANEL

Context  
Plus

Introducing the EP203/CON 3 zone automatic extinguisher panel from Context Plus.

LPCB certified to EN 12094 part 1 (Fixed Firefighting Systems - Components for Gas Extinguishing Systems) and EN54 parts 2 & 4, the panel epitomises quality, durability and reliability and is ideal for use in any area housing expensive, dangerous or irreplaceable items of equipment.

Featuring an intuitive 128 x 64 pixel two-colour graphic display that gives clear and concise feedback to the user, installer and commissioning engineer, the panel also includes six monitored inputs (including hold and abort), a time stamped log, adjustable flood times and volt-free changeover relays for fire, local fire, 1st stage active, 2nd stage active, extractor fan and fault.

The panel is supplied in a durable enclosure with all of its electronics - apart from its powerful 3A EN54-4 switch mode PSU - mounted on a detachable metal bridge plate for ease of installation. A wide range of ancillaries are also available including remote status units, hold-off and abort buttons, line terminators and output expansion relay boards.



MADE IN  
ENGLAND



0832-CPD-0794

Context Plus systems are certified and comply with the quality requirements specified in the standards.

## Key Features

- LPCB approved to EN 12094 part 1 and EN54 parts 2 & 4
- Functions as a standard three zone fire panel with additional circuitry for controlling the release of fire-suppressing gas into protected areas
- Unique 128 x 64 pixel graphical display facilitates straightforward system programming
- Any combination of activated zones can be programmed to automatically start the panel's extinguishant release sequence
- Includes a pull-down front-panel manual release button and two keyswitches for accessing the panel's functions and toggling between auto/manual mode
- Three conventional sounder circuits (two x 1st stage, one x 2nd stage)
- Powerful 3A EN54-4 compliant switch mode PSU
- Low quiescent current - less than 40mA on mains fail
- Wide range of monitored inputs and auxiliary outputs (see schematic overleaf)
- Abort and hold inputs allow the panel's release sequence to be cancelled or suspended at any time
- Time-stamped event log
- RS485 connections for up to eight flush or surface remote status units with their own LCDs, manual release and mode (auto/manual) switches. Single gang economy status units (without an LCD) are also available
- Extensive range of commissioning and engineering functions
- Optional relay expansion boards and single gang abort and hold buttons
- Ideal for use in computer rooms, telecommunication centres, archive storage areas, chemical plants, generator rooms, museums, etc
- System line terminator included with all panels



# EP203/CON AUTOMATIC EXTINGUISHER PANEL

Context  
Plus

## Products & Descriptions

### 3 Zone Automatic Extinguisher Panel

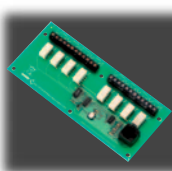


Part No: EP203/CON

Includes all of the circuitry for controlling the extinguishant release, a pull-down manual release button, a 128x64 pixel LCD display plus all of the features listed.

W467 x H293 x D100 mm

### Output Expansion Relay Board



Part No: EP212

Mounts inside the EP203 panel to provide volt-free changeover relay contacts for reset, mode, discharged, hold and abort. Max. 1 per EP203.

W162 x H70 x D20mm

### Flush Mounting Remote Status Unit



Part No: EP210F

Includes a status LCD, manual release and mode (auto/manual) switches. Max. 8 EP210F/EP2105 per EP203. Weatherproof enclosure also available, order code BF359/1.

W175 x H250 x D53mm

### Surface Mounting Remote Status Unit



Part No: EP210S

Includes a status LCD, manual release and mode (auto/manual) switches. Max. 8 EP210F/EP2105 per EP203. Weatherproof enclosure also available, order code BF359/1.

W160 x H240 x D51mm

### Single Gang Economy Status Unit



Part No: EP211

Includes a keyswitch operated mode (auto/manual) switch and three status LEDs. Max. 8 per EP203.

W87 x H87 x D35mm

### System Line Terminator



Part No: EP214

Allows the EP203's extinguishant release output to be terminated to a gas release solenoid. Max. 2 per EP203 (one EP214 is supplied with the EP203).

W55 x H55 x D22mm

### Extinguishant Hold Off/Abort Buttons



Part No: CP150ALB (Abort)  
CP200HLB (Hold)

Easy to operate buttons that can be used to delay/hold off or cancel/abort the extinguishant release. Order CP150ALB for Abort or CP200HLB for Hold. Hinged protective covers are supplied with both.

W89 x H93 x D59mm (without cover)

### Yellow Extinguishant Release Call Point

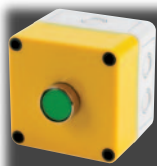


Part No: CP100RLR

A surface mounting call point that can be used to remotely trigger the EP203's extinguishant release sequence. Supplied with a hinged protective cover.

W89 x H93 x D59mm (without cover)

### EP215 IP66 Extinguishant Hold Off/Abort Buttons



Part No: EP215

An IP66 rated button that can be used to delay (hold off) or cancel (abort) the extinguishant release sequence depending on how it is connected.

W93 x H93 x D88mm

### BF372 Yellow Extinguishant Release Call Point, Surface



Part No: BF372

Certified to EN54 Part 11 (LPCB/vdS). Ideal for use with Context plus EP203 Automatic Extinguisher

Ordering Code  
MCP3A-Y000SG-14C

W93 x H89 x D60mm

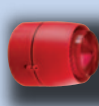
## COMMISSIONING & ENGINEERING FUNCTIONS

- **Zone selection:** Selects the zone combination that starts the extinguishant release sequence
- **Extinguishant delay:** Sets the countdown duration before extinguishant release
- **Extinguishant duration:** Sets the duration of the firing signal to the extinguishant output
- **Flooding time:** Sets the duration for the release of extinguishant
- **Extract option:** Enables/disables the ventilation extract option
- **Extract time:** Sets the duration for the ventilation extract fan operation
- **Sounder delay:** Sets the delay duration before the fire sounders are activated
- **Remote status unit learn:** Finds all remote status units and updates the panel's database
- **Extinguishant output EOLS:** Selects the number of extinguisher circuit terminations
- **Mode exceptions:** Selects the default setting mode when the mode input is in Fault and/or Disabled
- **Earth fault:** Disables/enables the panel's earth fault monitoring circuitry
- **Manual release mode:** Selects either delayed or immediate release of extinguishant output
- **Zone trigger:** Enables a short circuit condition on the three detection zones
- **Clean start:** Clears the panel's memory back to its default factory settings
- **Walk test:** Puts detection zone(s) into walk test mode
- **Test relays:** Tests the panel's auxiliary relay outputs
- **Test sounders:** Tests the panel's sounder circuits
- **Monitoring:** Applies a constant monitoring voltage
- **Show PSU stats:** Displays the status of the panel's power supply & standby battery

Also available for your gas extinguishing installations:



Bells



Sounder/Beacons



Xenon Beacons

# Context<sup>®</sup> Plus

## Other products in the Context Plus range



Addressable fire detection panels



Addressable smoke and heat detectors



HFC227ea  
Conventional fire suppression systems



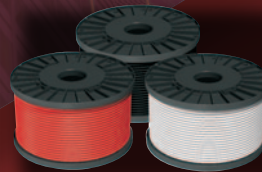
Addressable Signalling devices



Conventional wireless fire alarm systems



Stand-alone mains & battery operated smoke, heat & CO alarms



Fire resistant cables



EN54 compliant power supplies

### CONTEXT PLUS LIMITED

Progress House, Newby Industrial Estate, Newby Road, Hazel Grove, Stockport, Cheshire SK7 5DA. England.

Tel: +44 161 257 2541. Fax: +44 161 225 8817.

E-mail: [sales@contextplus.co.uk](mailto:sales@contextplus.co.uk) Website: [www.contextplus.co.uk](http://www.contextplus.co.uk)

MADE IN ENGLAND