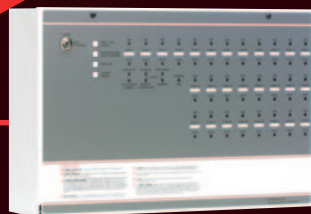


Context[®]
Plus

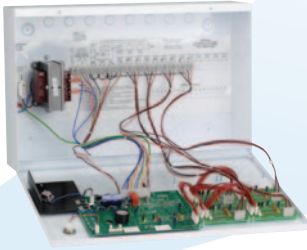
Conventional Fire Equipment Catalogue



FP 1-14 ZONE CONVENTIONAL FIRE PANELS



MADE IN ENGLAND FP Fire Panel
Part Numbers below



Designed to comply with BS5839-4, our FP 1-14 zone fire panels are supplied in robust metal enclosures with lift-off lids and heavy-duty base connections. Their broad compatibility with virtually all known conventional smoke and heat detectors and their ability to interpret a short circuit as a fire or fault make them the perfect choice for a host of applications.

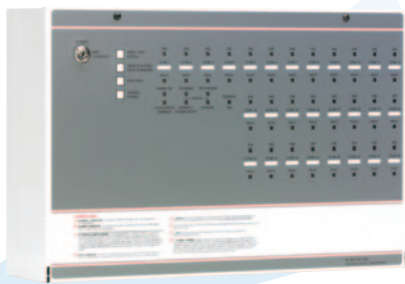
Key Features

- ▶ Fully compliant with BS 5839 Part 4
- ▶ Lift-off lid for easy first fix and maintenance
- ▶ Two conventional sounder circuits.
- ▶ Built-in 24V power supply and battery charger
- ▶ Optional head removal monitoring facility
- ▶ Separate indicators for open and short circuit fault, sounder fault and battery/power supply fault
- ▶ Non-latching 'class change' sounder input, latching fire and non-latching fault outputs (available via optional expansion loom)
- ▶ Fault buzzer mute facility
- ▶ Space available for the rated capacity of VRLA batteries
- ▶ Short circuit = fire facility (pre-1980 BS, no resistors in call points), selectable on a zone by zone basis - ideal for retro-installations
- ▶ One man walk test and zone isolate facility (not on FF380/CON)
- ▶ Ancillary connections for repeater panels and other add-ons including fault relay modules, fire relay modules, sounder delay relay modules, sounder extender kits, etc (not on FF380/CON)
- ▶ Fully compatible with the Context Plus UL-listed 65A & EN listed 65E range of conventional detectors and ActiV range of Intertek certified conventional detectors.

FP ORDER CODES

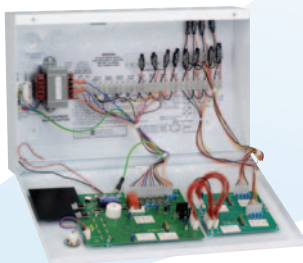
| | Part Code |
|-----------------------------------------------------------------------------------------------------|-------------|
| 1 Zone EFP fire panel, non-expandable, complete with 2 x 1.2A/H SLA batteries, Context Plus branded | FF380/CON |
| 2 Zone FP fire panel, non-expandable, complete with 2 x 1.2A/H SLA batteries, Context Plus branded | FF382/CON |
| 4 Zone FP fire panel, non-expandable, complete with 2 x 1.2A/H SLA batteries, Context Plus branded | FF384/CON |
| 8 Zone FP fire panel, non-expandable, complete with 2 x 2.3A/H SLA batteries, Context Plus branded | FF388/CON |
| 4 zone FP fire alarm panel, expandable to 6 zones, batteries not included, Context Plus branded | FF384-2/CON |
| 8 zone FP fire alarm panel, expandable to 14 zones, batteries not included, Context Plus branded | FF388-2/CON |
| 2 zone FP extender PCB kit | FF387Z-2 |
| Ten zone repeater panel | FF396-2 |
| Twenty zone repeater panel | FF398-2 |

MFP 16-28 ZONE CONVENTIONAL FIRE PANEL



MADE IN
ENGLAND

MFP Fire Panel
Part Numbers below



Designed to comply with BS5839-4 and with 'head out' monitoring provided as standard, our MFP microprocessor based 16-28 zone fire panels are supplied in robust metal enclosures with lift-off lids and heavy-duty base connections.

Their broad compatibility with virtually all known conventional smoke and heat detectors and their ability to interpret a short circuit as a fire or fault make them perfect for a host of applications.

Key Features

- ▶ Fully compliant with BS 5839 Part 4
- ▶ Robust metal lid and metal back box with heavy-duty base connections
- ▶ Four sounder circuits and head out (detector removed) fault indication provided as standard
- ▶ FF516/CON supplied as a 16 zone panel, extendable to 20, 24 or 28 zones using FF501Z Four zone extender kits
- ▶ End of line units included (one per zone)
- ▶ Separate indication of open circuit, short circuit, head out, sounder and battery/PSU faults
- ▶ Non-latching 'class change' sounder input, latching fire & non-latching fault outputs (via MFPX loom)
- ▶ Fault buzzer mute facility
- ▶ Short circuit = fire facility (pre-1980 BS, no resistors in call points), selectable on a zone by zone basis for retro-installations
- ▶ Non-latching zones facility for cross connection to other panels
- ▶ Wide range of engineer facilities including one man detector test, sounder walk test, sounder isolate, sounder delay and auxiliary isolate
- ▶ Up to eight two-wire repeaters with full external control (except isolate) per system (requires one FF596T Repeater Transmitter PCB fitted at the main panel)
- ▶ Fully compatible with the Context Plus UL-listed 65A & EN listed 65E range of conventional detectors and ActiV range of Intertek certified conventional detectors.

MFP ORDER CODES

| | |
|----------------------------------------------------------------------------------------------|-----------|
| 16 zone MFP fire panel, expandable to 28 zones, batteries not included, Context Plus branded | FF516/CON |
| MFP 4-zone MFP extender PCB kit | FF501Z |
| Expansion loom for MFP panel | FF574X |
| MFP repeater transmitter | FF596T |
| MFP 8 zone repeater panel | FF596 |
| MFP 8 zone repeater extender card | FF596R |
| MFP end of line device | BF-EOL |

Part Code

CFP 2-8 ZONE CONVENTIONAL FIRE PANELS

Our CFP range of 2-8 zone fire panels are LPCB certified to EN54-2/4 and offer an array of user and installer-friendly features. Supplied in an attractive flush or surface mountable plastic enclosure, all versions have four conventional sounder circuits, class change and alert inputs, on-board fire and fault relays and combined keypad/keyswitch entry. A wide range of engineering functions are also provided with optional repeaters and relay expansion cards also available.



CFP Fire Panel
Part Numbers below

MADE IN
ENGLAND

Key Features

- ▶ **LPCB certified to EN54 parts 2 & 4**
- ▶ **Intuitive user-friendly interface with colour-coded buttons and combined keypad/keyswitch entry to access level 2**
- ▶ **2, 4 or 8 zone circuits (dependent on model purchased) Four conventional sounder circuits**
- ▶ **Integral 1.5A EN54-4/A2 compliant switch mode PSU**
- ▶ **Wide range of engineering functions including zone test, coincidence*, zone delay and non-latching zones***
- ▶ **Two on-board relays (Fire and Fault)**
- ▶ **Two open-collector outputs (Remote and Reset) 'Class change' and alert inputs**
- ▶ **Installer-friendly design accommodates easy first fix and straightforward maintenance**
- ▶ **Attractive flush or surface mountable plastic lid and enclosure - no bezel required**
- ▶ **Low quiescent current**
- ▶ **Multiple indicators**
- ▶ **End of line units included (one per zone)**
- ▶ **Ancillary system expansion connections provided for up to eight two-wire repeaters (one CFP761 network driver card required per system) and optional CFP relay boards**
- ▶ **Fully compatible with the Context Plus UL-listed 65A & EN listed 65E range of conventional detectors and ActiV range of Intertek certified conventional detectors.**

CFP ORDER CODES

| | Part Code |
|-----------------------------------------------------------------------------------------------|------------------|
| 2 Zone CFP Panel, non-expandable, LPCB Approved, batteries not included, Context Plus branded | CFP702-4/CON |
| 4 Zone CFP Panel, non-expandable, LPCB Approved, batteries not included, Context Plus branded | CFP704-4/CON |
| 8 Zone CFP Panel, non-expandable, LPCB Approved, batteries not included, Context Plus branded | CFP708-4/CON |
| 8 Zone CFP repeater panel, Context Plus branded | CFP760/CON |
| CFP repeater network card | CFP761 |
| CFP 4 relays output card | CFP762 |
| CFP 12 relays zonal output card | CFP763 |
| Zonal Board with only 2 relays to give zonal alarm per zone for the CFP 2 zones | CFP766 |
| Zonal Board with only 4 relays to give zonal alarm per zone for the CFP 4 zones | CFP765 |
| Zonal Board with only 8 relays to give zonal alarm per zone for the CFP 8 zones | CFP764 |

Context[®] Plus

Other products in the Context Plus range



Addressable fire detection panels



Addressable smoke and heat detectors



HFC227ea
Conventional fire suppression systems



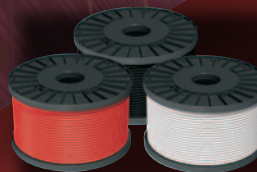
Addressable Signalling devices



Conventional wireless fire alarm systems



Stand-alone mains & battery operated smoke, heat & CO alarms



Fire resistant cables



EN54 compliant power supplies

CONTEXT PLUS LIMITED

Progress House, Newby Industrial Estate, Newby Road, Hazel Grove, Stockport, Cheshire SK7 5DA. England.

Tel: +44 161 257 2541. Fax: +44 161 225 8817.

E-mail: sales@contextplus.co.uk Website: www.contextplus.co.uk

MADE IN ENGLAND